

Figure S2.1: (a) Temporal development of running 30-year mean changes in winter (DJF) mean air temperature (changes of running 30-year mean averages throughout the period 1971–2098 in comparison to the reference period 1971–2000) averaged over the British Isles region for five simulations of CNRM GCM with perturbed initial conditions. (b) Smoothed functional data from panel (a), created as described in Sect. 3. The lines in both panels are coloured according to member of perturbed initial conditions mini-ensemble.

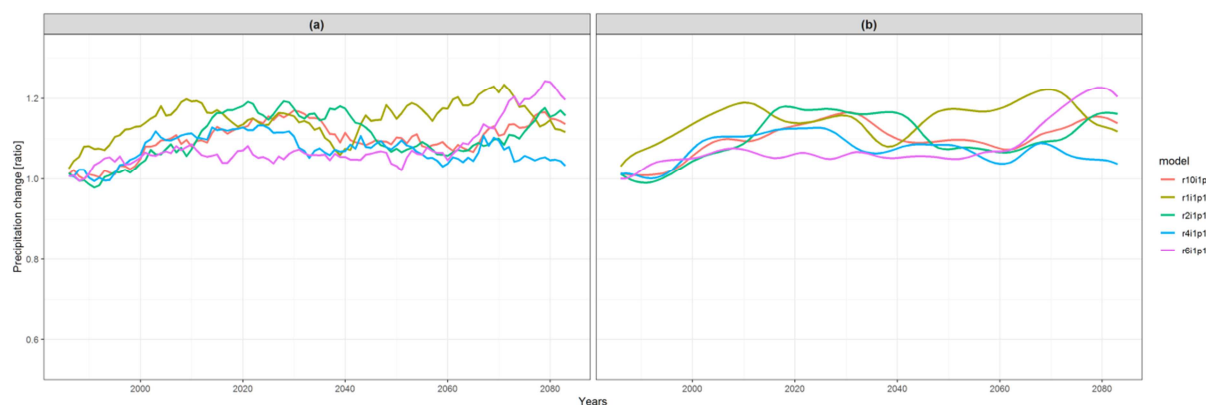


Figure S2.2: The same as Fig. S2.1, but for running 30-year mean changes in summer (JJA) mean precipitation (relative changes of running 30-year mean averages throughout the period 1971–2098 in comparison to the reference period 1971–2000) averaged over the Eastern Europe region.

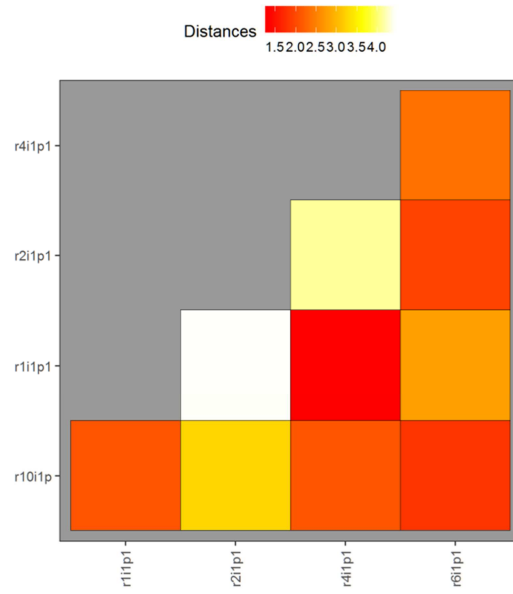


Figure S2.3: Heatmap of the d_0 distances for running 30-year mean changes in winter (DJF) mean air temperature over British Isles (the curves shown in Fig. S2.1b, underlying data in Fig. S2.1a) with redder colour for larger similarity, brighter colour for smaller similarity between respective curves.

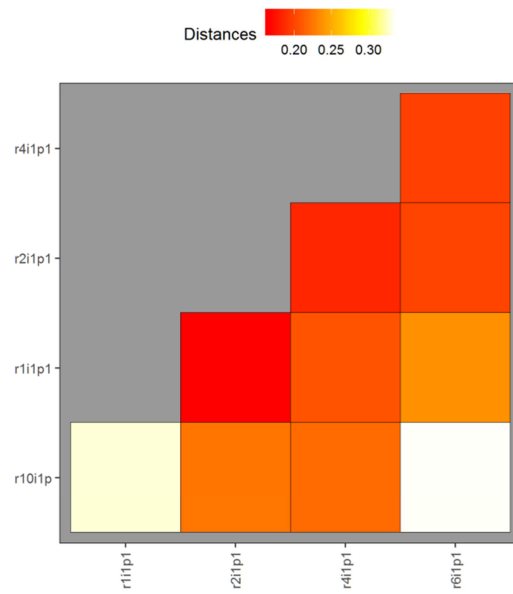


Figure S2.4: The same as Fig. S2.3, but for d_1 distances.

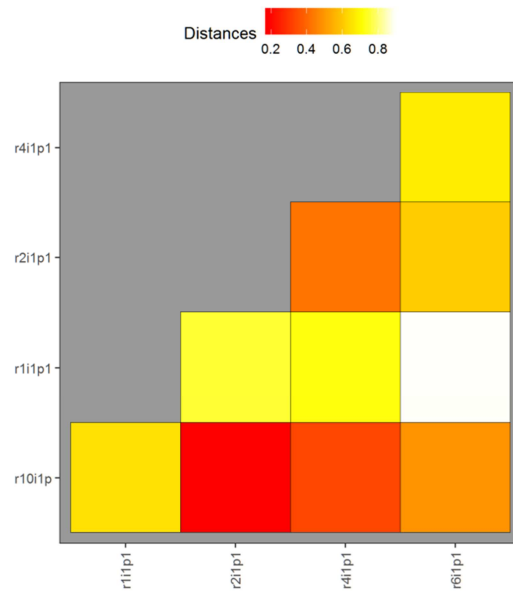


Figure S2.5: The same as Fig. S2.3, but for running 30-year mean relative changes in summer (JJA) mean precipitation over Eastern Europe region (the curves shown in Fig. S2.2b, underlying data in Fig. S2.2a).

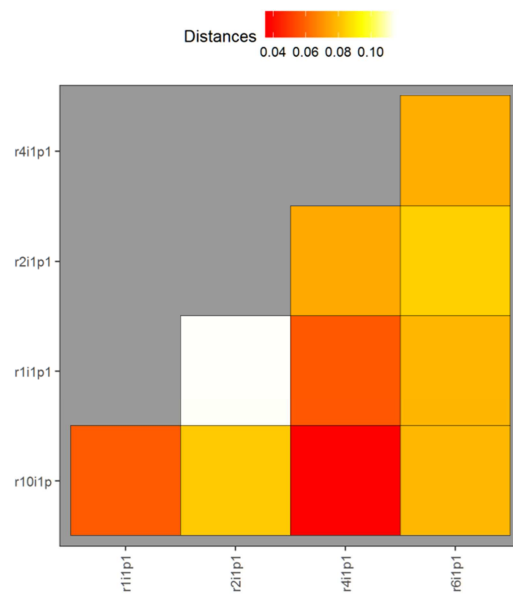


Figure S2.6: The same as Fig. S2.3, but for d_1 distances.

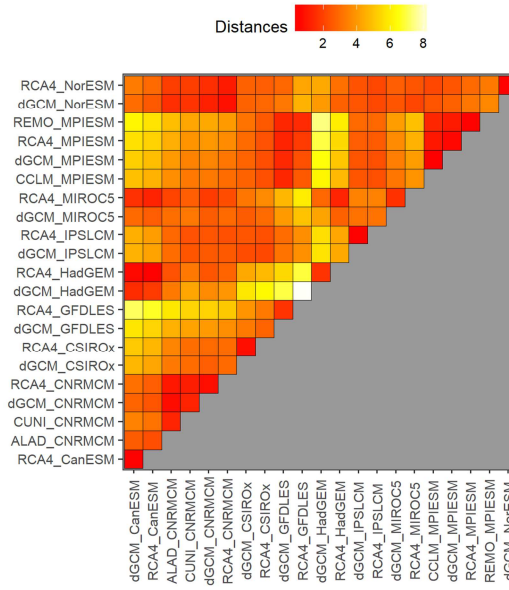


Figure S2.7: Heatmap of the d_0 distances for running 30-year mean changes in winter (DJF) mean air temperature over British Isles (the curves shown in Fig. 1b, underlying data in Fig. 1a) with redder colour for larger similarity, brighter colour for smaller similarity between respective curves. The acronyms of the model simulations are explained in Sect. 2. The definition of the distances is explained in Sect. 3.1.

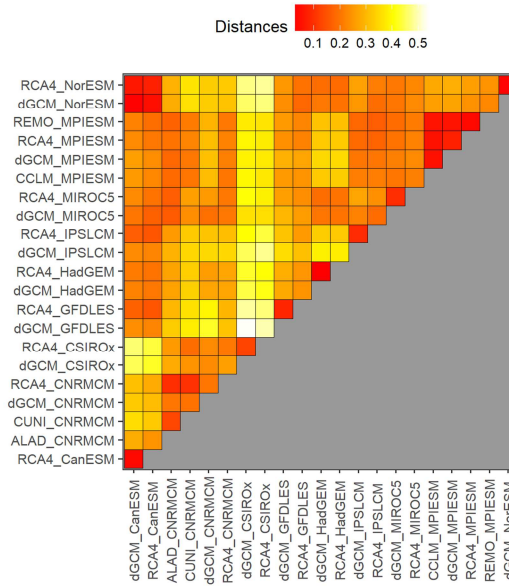


Figure S2.8: The same as Fig. S2.7, but for d_1 distances.

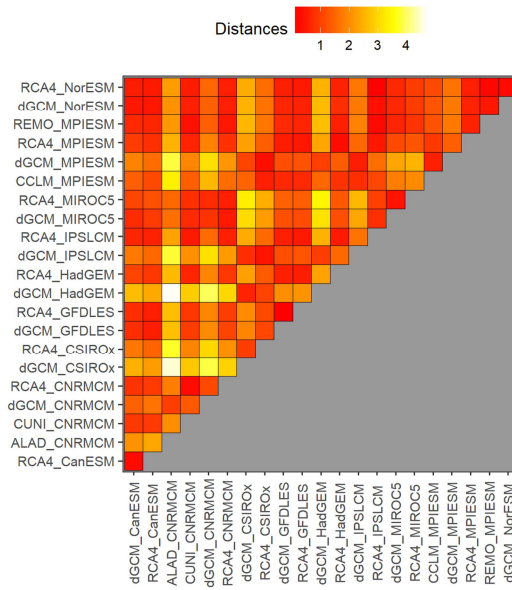


Figure S2.9: The same as Fig. S2.7, but for running 30-year mean relative changes in summer (JJA) mean precipitation over Eastern Europe region (the curves shown in Fig. 2b, underlying data in Fig. 2a).

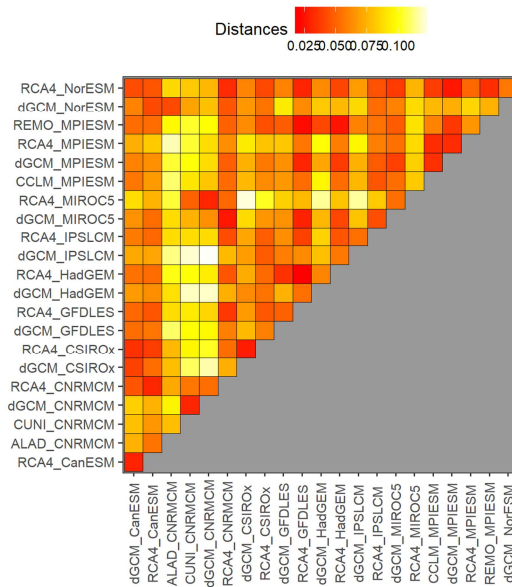


Figure S2.10: The same as Fig. S2.8, but for running 30-year mean relative changes in summer (JJA) mean precipitation over Eastern Europe region (the curves shown in Fig. 2b, underlying data in Fig. 2a).