

Figure S1: Annual-mean air temperature and specific humidity differences – Point 18

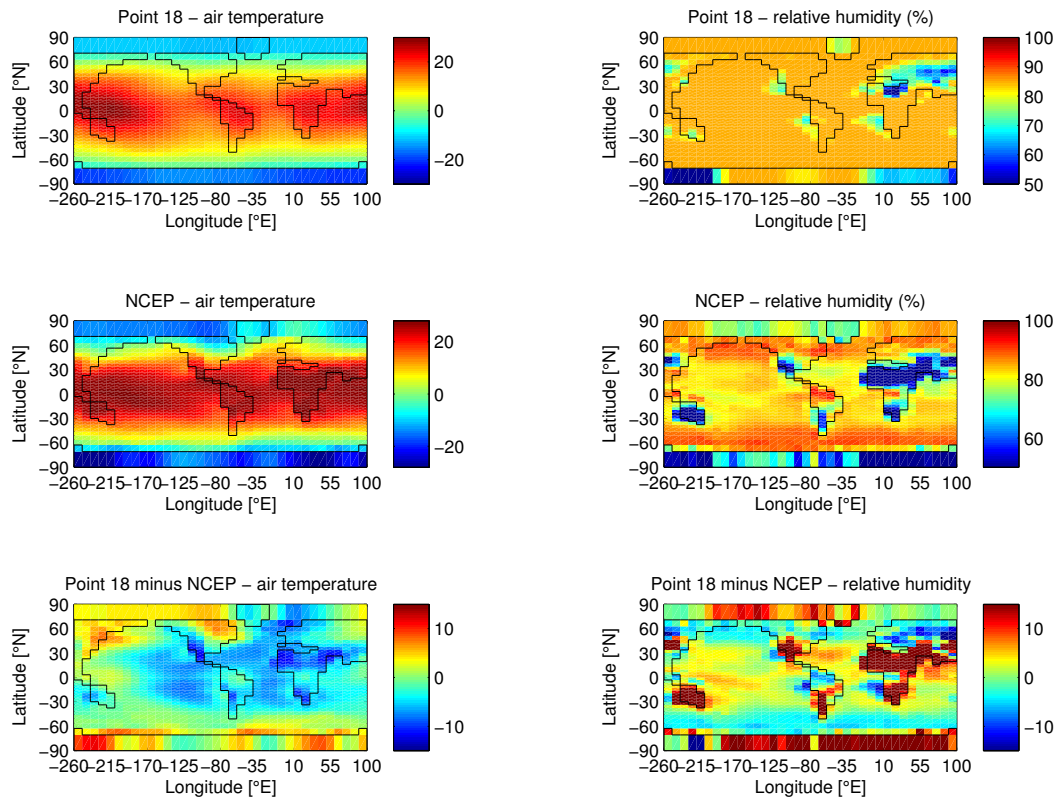


Figure S2: Annual-mean air temperature and specific humidity differences – Point 37

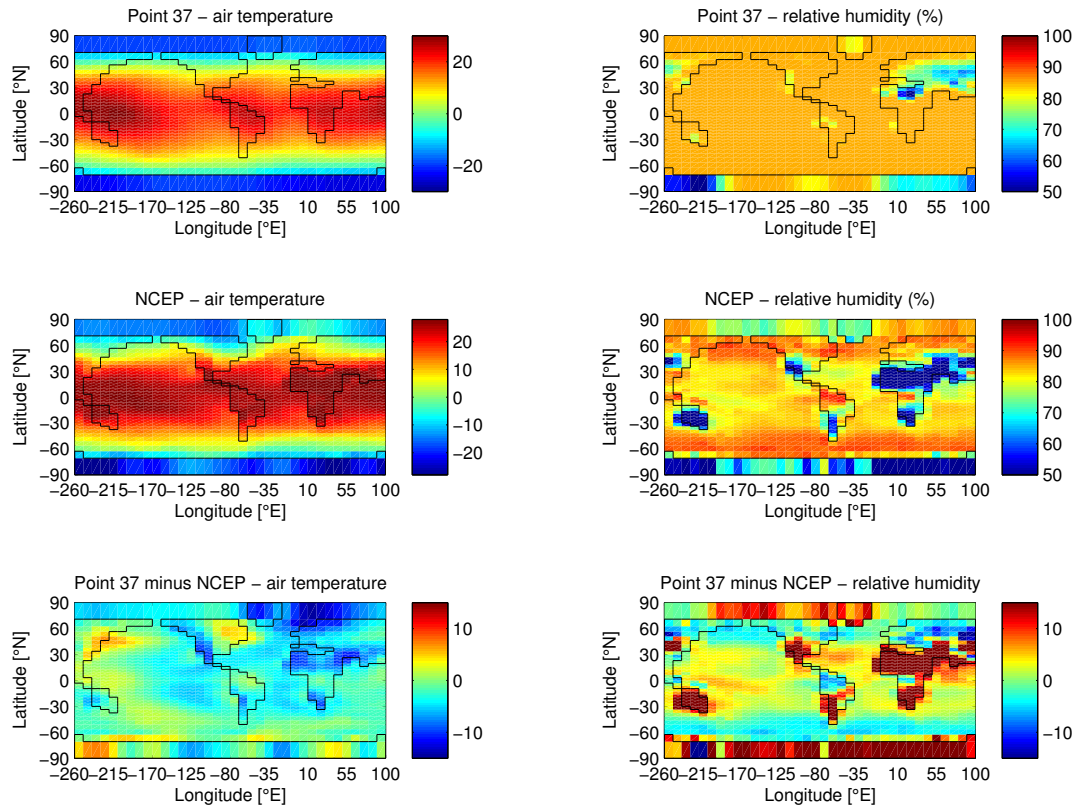


Figure S3: Annual-mean air temperature and specific humidity differences – Point 49

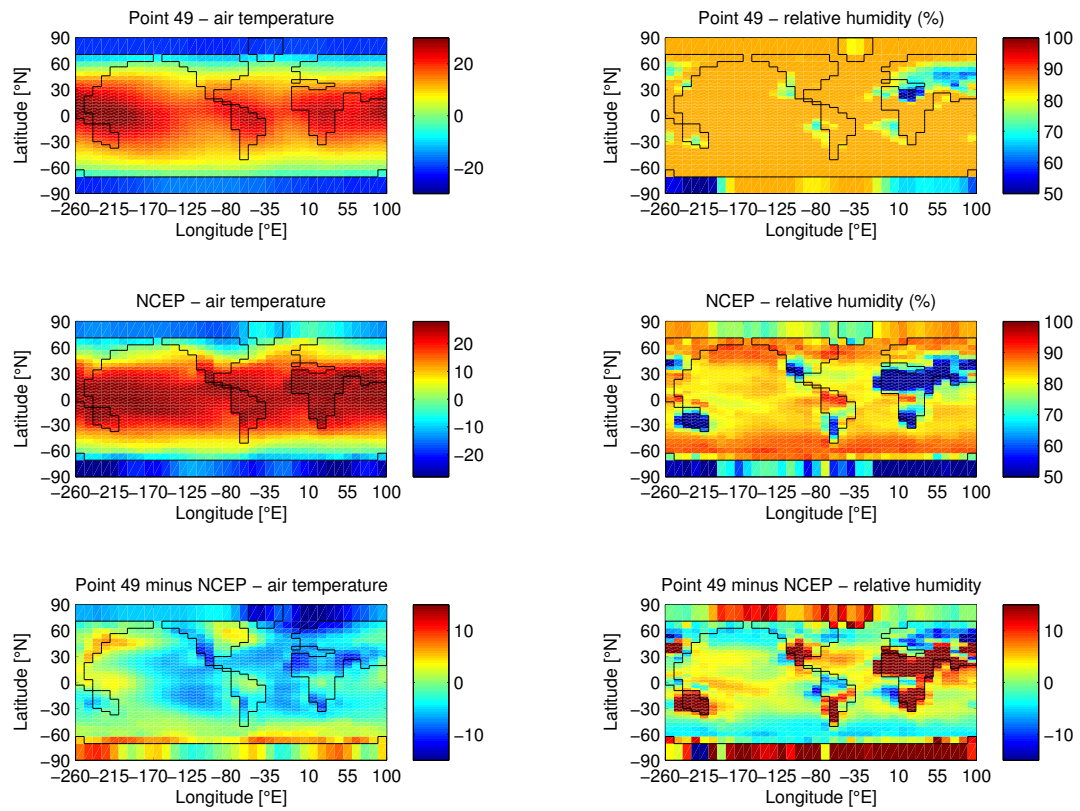


Figure S4: Annual-mean air temperature and specific humidity differences – Point 56

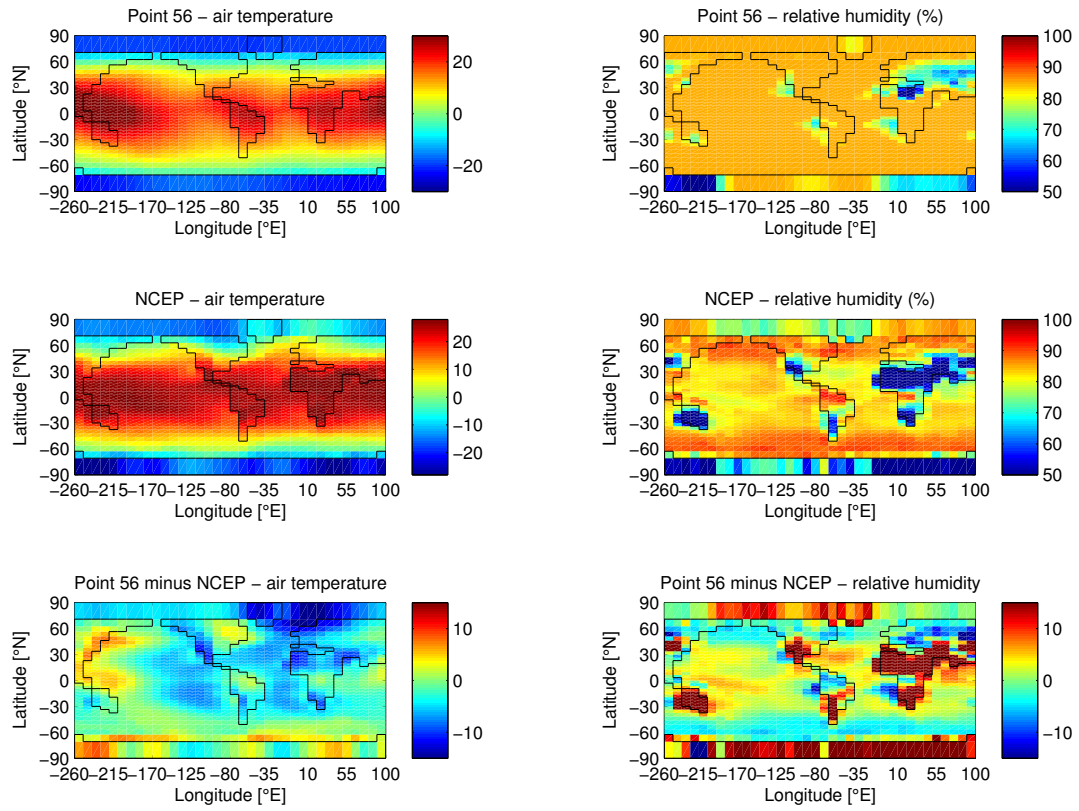


Figure S5: Annual-mean air temperature and specific humidity differences – Point 74

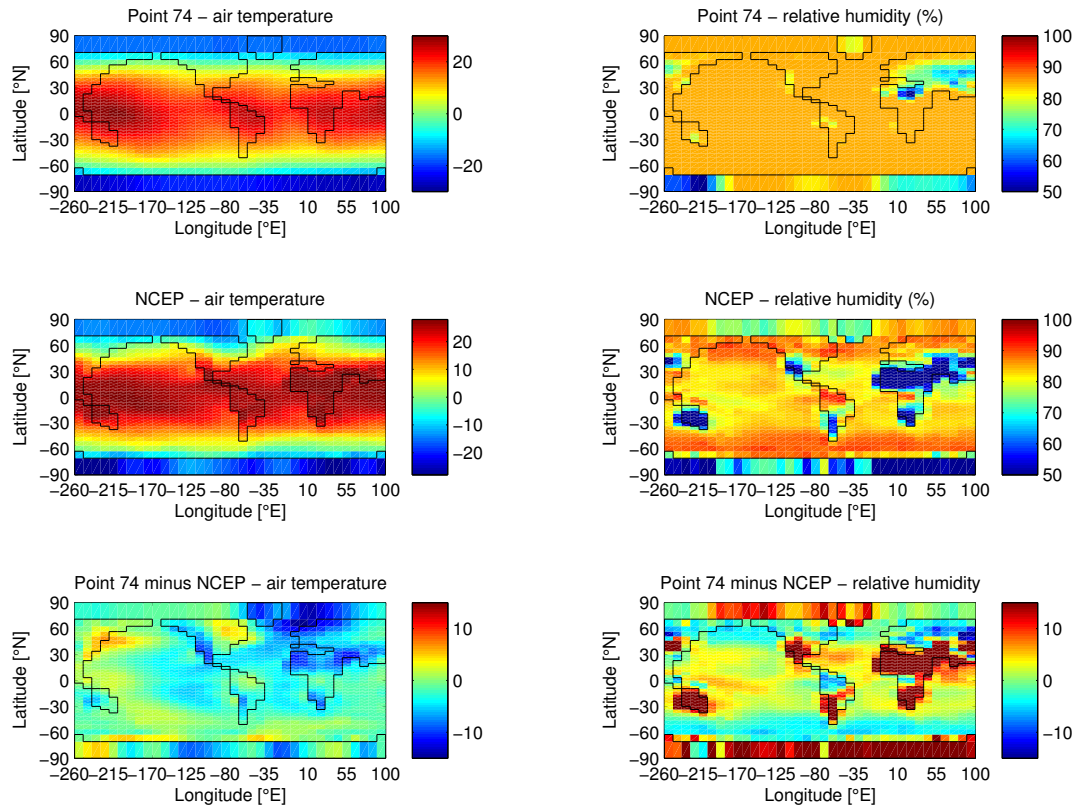


Figure S6: Annual-mean air temperature and specific humidity differences – GMD11

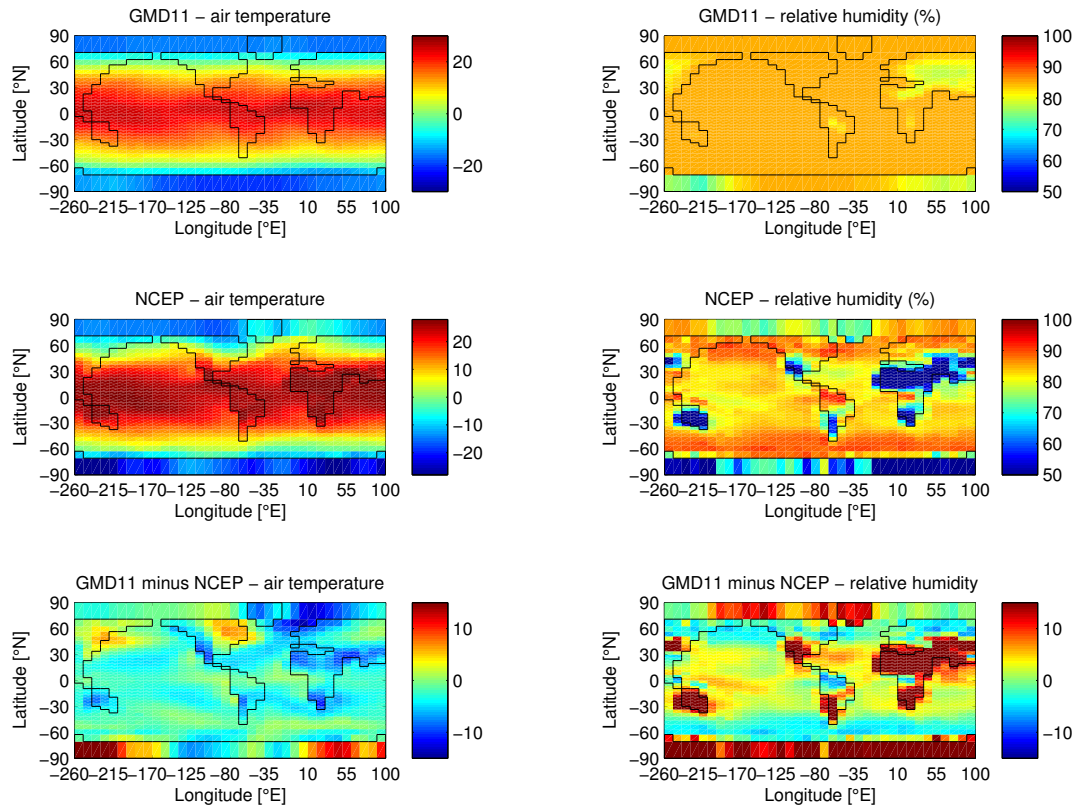


Figure S7: Annual-mean sea surface temperature and salinity differences – Point 18

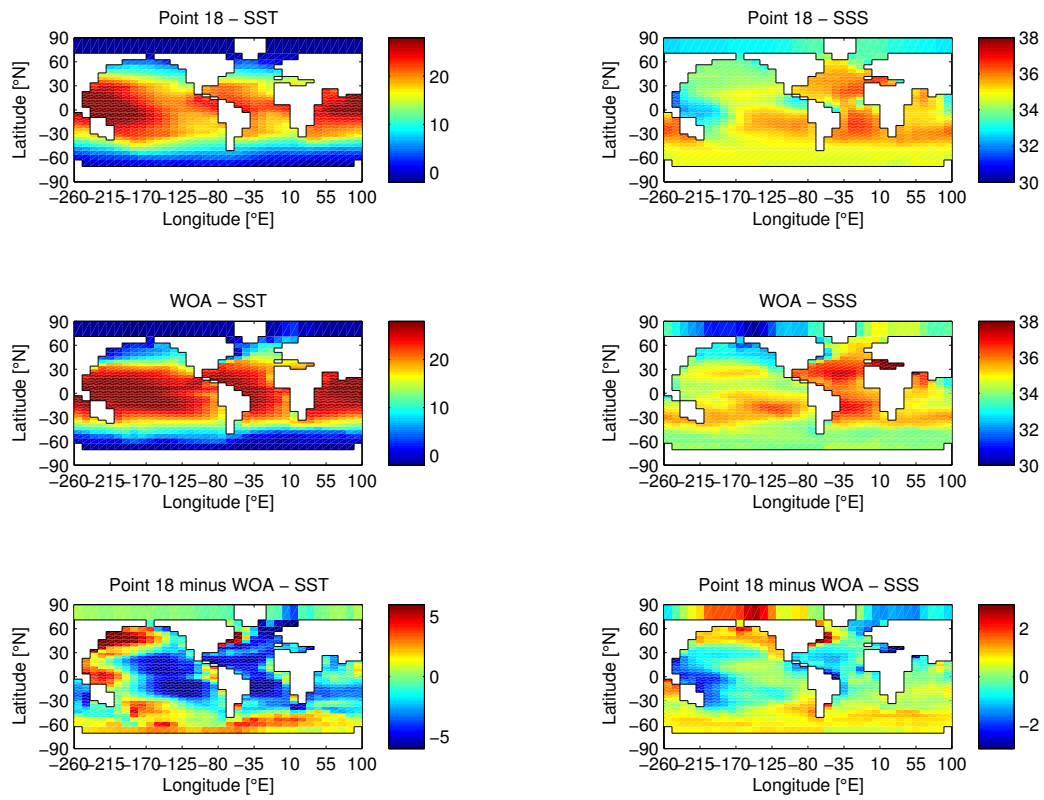


Figure S8: Annual-mean sea surface temperature and salinity differences – Point 37

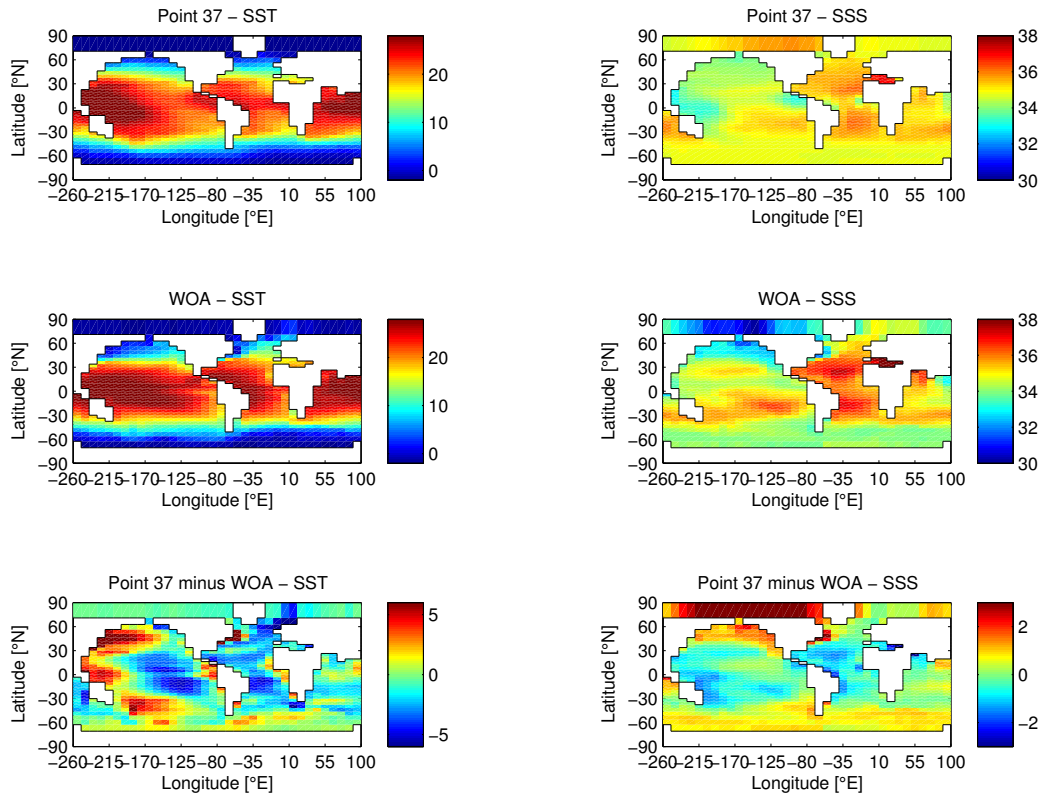




Figure S9: Annual-mean sea surface temperature and salinity differences – Point 49

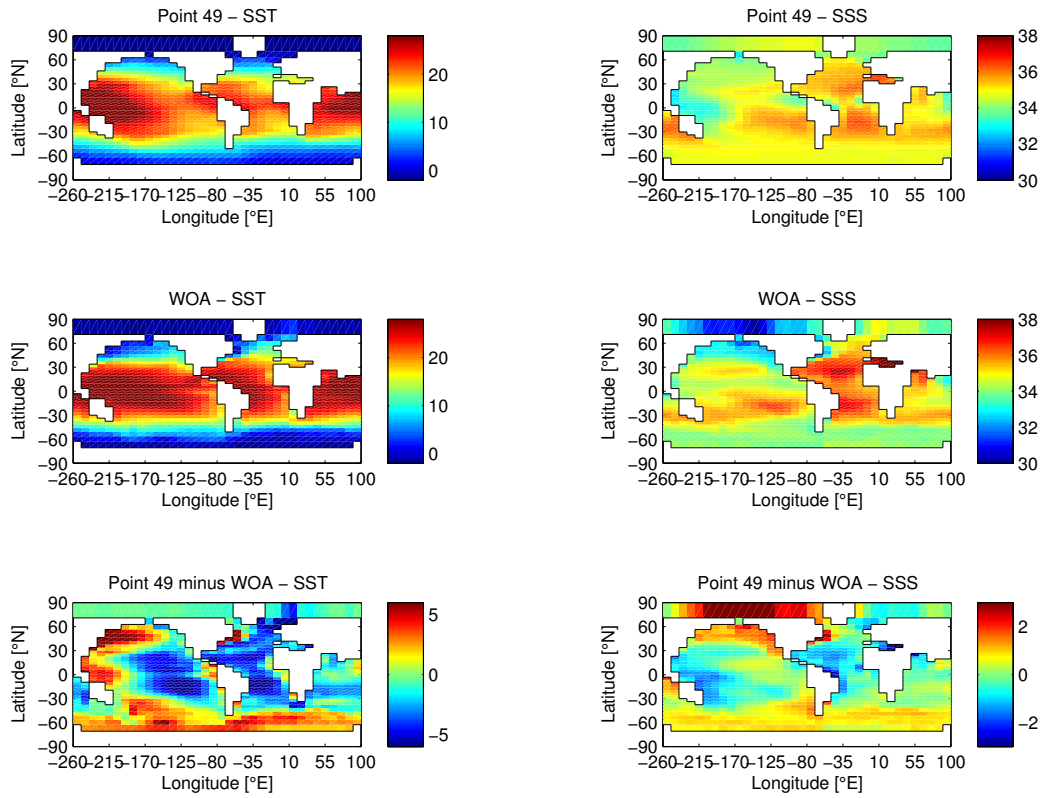


Figure S10: Annual-mean sea surface temperature and salinity differences – Point 56

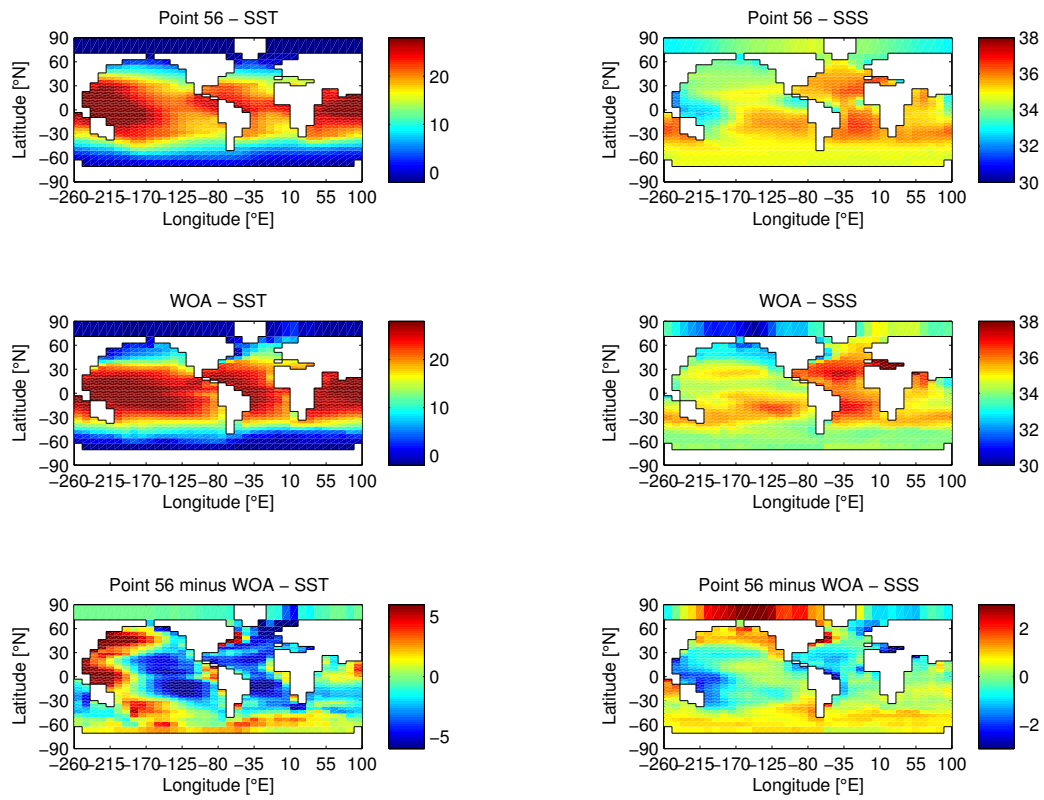


Figure S11: Annual-mean sea surface temperature and salinity differences – Point 74

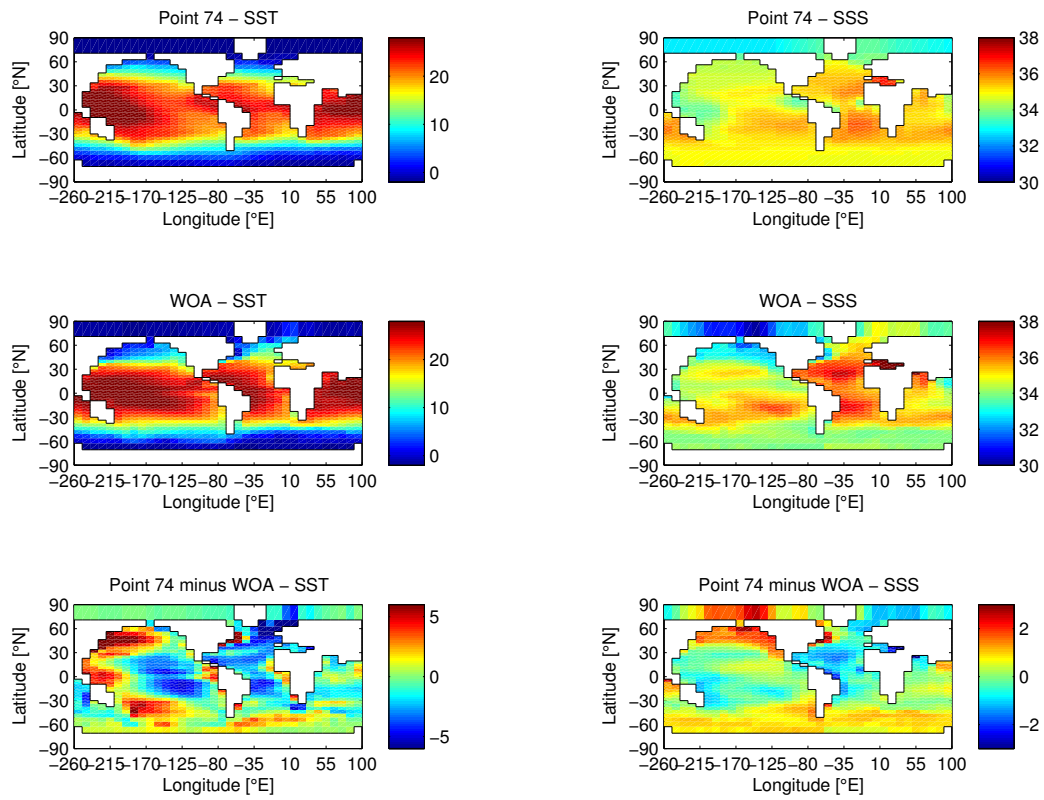


Figure S12: Annual-mean sea surface temperature and salinity differences – GMD11

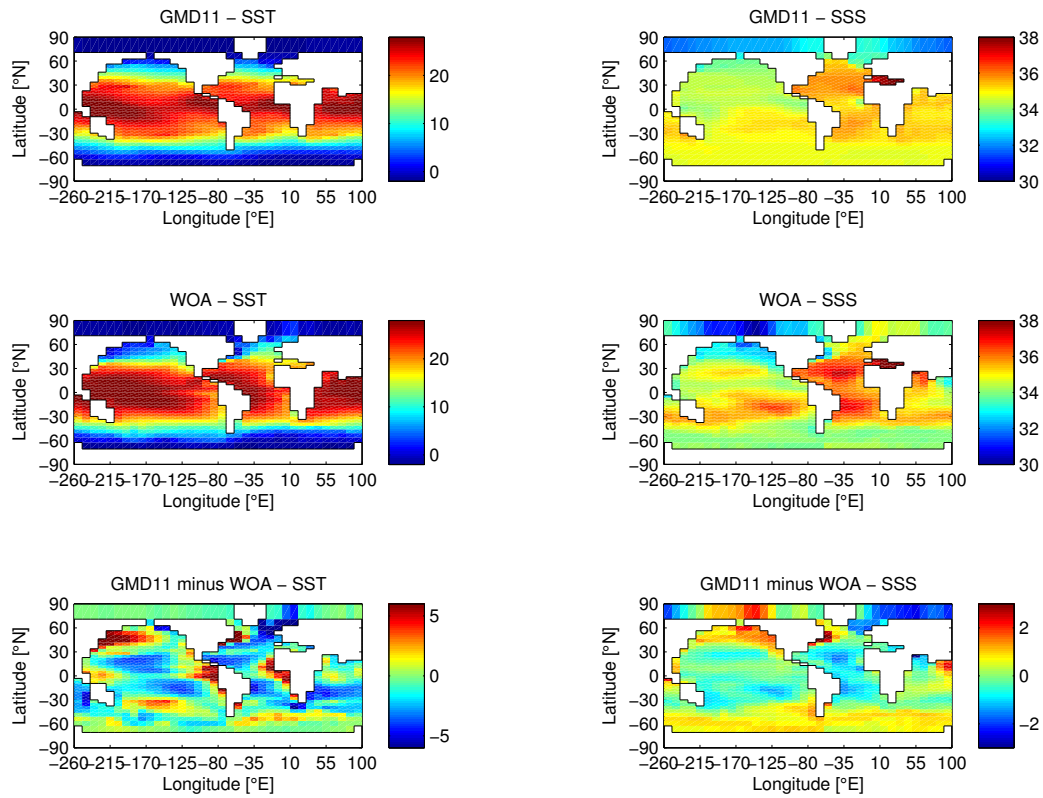


Figure S13: Annual-mean sea ice concentration – NCEP/NCAR re-analysis for 1986

